

THE VOICE OF MSW

February 1, 2024

STUDENT CREATED

VOL 1 ISSUE 2

THE SCOOP ON SNOW DAYS



BY: OLIVER BLAIR

IN THE PAST FEW WEEKS, WE HAVE HAD A LOT OF SNOW BUT HOW WILL THIS AFFECT OUR DAYS OFF? AS YOU MAY KNOW WHEN WE HAVE SNOW DAYS, WE DO NOT JUST GET A FREE DAY OFF SCHOOL, WE MAKE UP THESE DAYS IN THE FORM OF HALF DAYS WHEN WE WOULD NORMALLY HAVE OFF COMPLETELY. THE SCHOOL ADMINISTRATION PLANS FOR US TO HAVE 4 SNOW DAYS PER YEAR, AND WE HAVE ALREADY HAD THREE. SO, WHAT HAPPENS IF WE RUN OUT OF SNOW DAYS? TO ANSWER THIS QUESTION, I TALKED TO THE HEAD OF SCHOOL, MS. WELSH-BEAR. SHE RELAYED THAT IF WE RUN OUT OF SNOW DAYS THE STAFF WILL MEET TO DECIDE WHAT WILL HAPPEN. THERE IS ONE OF THREE THINGS THEY CAN DO. FIRSTLY, THEY COULD DEDUCT HALF DAYS FROM EITHER MARCH TWENTY-SECOND, MARCH TWENTY-NINTH, OR MAY TWENTY-FOURTH. ADDITIONALLY, THEY COULD DECIDE TO TAKE AWAY DAYS FROM SPRING BREAK WHICH I THINK IS THE WORST OPTION BECAUSE I HAVE PLANS. LASTLY, THEY COULD MAKE IT A VIRTUAL DAY LIKE HOW WE ATTENDED SCHOOL IN 2020.



Classroom Spotlight

MRS. QUINN AND MS. WINTER'S CLASS SPOTLIGHT

BY: CAROLINE SCHRIVER

CURRENTLY IN MRS. QUINN AND MS. WINTER'S CLASS, THEY ARE LEARNING ABOUT THE ROCK CYCLE AND SEDIMENTARY, METAMORPHIC, AND IGNEOUS ROCKS. THEY ARE ALSO LEARNING ABOUT THE TREE OF LIFE. A BIG ACCOMPLISHMENT THEY'VE MADE IS COMPLETING THEIR DAILY WORK PLAN CONSISTING OF FIVE SUBJECTS. THE GUIDES ARE FOCUSED ON HELPING STUDENTS SELECT WORKS THAT CHALLENGE STUDENTS TO PRACTICE THE THINGS THEY HAVE RECENTLY LEARNED. THE BEST THING ABOUT TEACHING, ACCORDING TO MRS. QUINN, IS THE EXCITEMENT WHEN A STUDENT UNDERSTANDS SOMETHING AFTER THEY HAVE STRUGGLED WITH IT. THEY LOVE IT WHEN A STUDENT COMES TO THEM EXCITED ABOUT LEARNING SOMETHING NEW! BOTH GUIDES LIKE HOW THE LEARNING PROGRAM IS UNIQUE TO EACH STUDENT. IN THEIR CLASSROOM, LEARNING IS TAILORED FOR EACH STUDENT'S ACADEMIC LEVEL WITH A WIDE VARIETY OF WORKS TO USE.



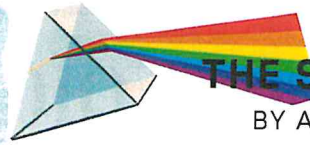
SLEDDING!

BY: OLIVIA BURLEY
WHENEVER WE
HAVE A SNOW DAY,
AFTER MRS.
MISNER TRIES HER
BEST TO TAKE US
OUT SLEDDING AS
A FUN ACTIVITY!



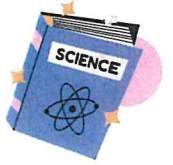
MRS. QUINN AND MS.
WINTER'S CLASS HAD
A LOT OF FUN
SLEDDING FROM THE
LOOKS OF IT. THEIR
CLASS HAD MANY
SMILING FACES
WHILE GOING DOWN
THE BIG HILL.

THESE ARE THE
BEGINNINGS AND PRIMARY
CLASSES ON THEIR
SLEDDING DAY. THEY HAD
SO MUCH FUN!



THE SCIENCE FAIR

BY ARISTIN BITTINGS



THE SCIENCE FAIR IS AN EVENT OUR SCHOOL
HOLDS EACH YEAR. LOWER AND UPPER
ELEMENTARY STUDENTS RESEARCH A TOPIC AND
CREATE A DISPLAY POSTER TO SHARE WHAT
THEY LEARNED. MEANWHILE, MIDDLE SCHOOL
STUDENTS RESEARCH AND WRITE A RESEARCH
PAPER IN "JAN TERM". THEY PRESENT THEIR
FINDINGS ON A DISPLAY DURING THE FAIR. IT'S A
FUN THING TO DO FOR ALL STUDENTS! THE
SCIENCE FAIR GIVES THE STUDENTS THE SPACE
TO BE CREATIVE AND DIVE INTO WHAT THEY ARE
MOST INTERESTED IN. IT TAKES TIME TO PREPARE
VISUALS AND INFORMATION TO PRESENT. THIS
PROJECT HELPS CONNECT THE STUDENTS. IT
ALSO INTRODUCES A PATHWAY TO ANSWERING
QUESTIONS THEY HAVE OF THE NATURAL WORLD.
IT IS A TRULY WONDERFUL EVENT THAT MSW
HOLDS!



NEWSPAPER STAFF:

CHRISTINA BAIN, EDITOR IN CHIEF
LIAM BRIM, ASSISTANT EDITOR
CAROLINE SCHRIVER, JOURNALIST
ARISTIN BITTINGS, JOURNALIST
OLIVIA BURLEY, JOURNALIST
OLIVER BLAIR, JOURNALIST
SAHANA PATEL, PHOTOGRAPHER
TRISTAN VALLEGOTTI, PHOTOGRAPHER
FEILYXX LIPPY, GRAPHIC DESIGNER

Winter Puzzles

by: Liam Brim

NLYVXNZRBIQFVQTPJWYCWYRRPXIREX
 LTHTKZSESHSTAMHLHQKEVBEMUEXPMPJ
 NKXFIEI IWQTMCEFIKIOFJPDCZUFTEH
 AOSDNXVFXYYXHXCAZWWOZVOURUWZQJC
 YXZWEPIVBREAKRXLTLVXNBHHZESBRA
 HFYLSSEBYDTYQSVQXMGBEAKERBANCTX
 CZTULRQVXCHXLPFETCRHESCADIOYHV
 PMEHEILJFOWRWKTM PKMZVEREDEWSBM
 XEWYDMGCJRWJTPMEHEVAOQCUBPOXTW
 DQSLDERJBMSFABNSZVCSMNGNQXQLPK
 OSXJINXP I RULZSHRCPBRSLALWKBNI O
 XUAWNTFUPAJILTRTPISXFJKDHUOMXU
 VMPRGSTWIZPJ VAFYSSSELKRUKXNOGTN
 OWTBNSXGRALGTTEWGGJNKEKKULPUKZ
 BIQFZWSFUQEEIIMQDBGJCLIORZFPPB
 WNOKAQCIKEKUHCUWHBIFJEKIJHRBQH
 QTFEHILQLOHWVZIRMPBKDQHURUDRFR
 LEJDZBRAILBPCFNCGFHA INQJWRLEJR
 URAPQGWJFTTMAACXLNVDRKBOIFISPS
 KKICEHGF DUTTSQSWWETUENBIHEUEBV
 VTHSGUQBNFOXGWVEMLSWADGJLFCVX
 ASKKNLGOCGKFWWITEACECRSWVXHROI
 ZXYKLOSFDYCQLEIJAFBSTXQAJMVCHH
 LMPNHJWTMJYFRWMSGIFCIFRHHHWHKY
 RYQCGOIBEUBLEYHMMSMSAOYQWOABUTM
 GTNAWSTIAWSNOWBOARDTNLNOVZJNMN
 DVPLUBCURLBLWPHAOXDBEXDOJXTDGF
 JJQWKDEXXULJPDQWEDGKIRQAUVQZBL
 ASUDJIECHHIZDISPLAYJRSFQEWHRQL
 XHOFVDBBQFJNUDEKEVXUUHOKPWGHR O



experiments

snowboard

reaction

fair

sledding

snowball

research

cold

science

icicles

display

ice

winter

static

beaker

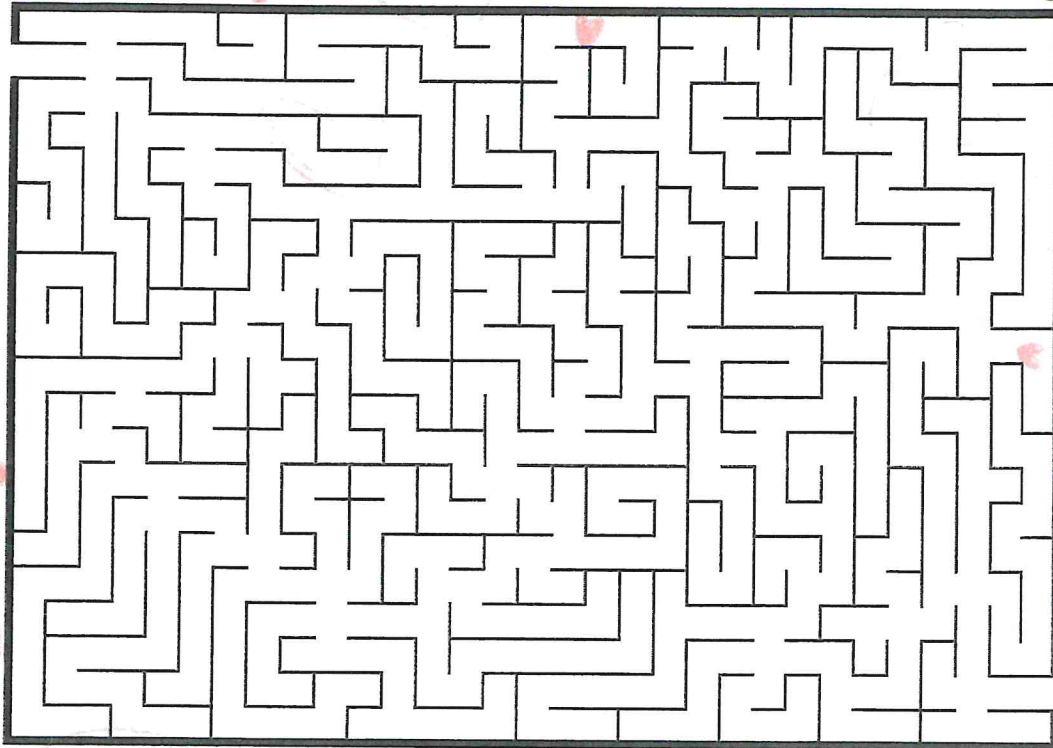
break

barn

snow



BE MY
VALENTINE?
☐ Yes ☐ No



yes!

Solve the clues below using the word: Heart

1. Committed to your memory
2. A man with similar likes and interests
3. Someone who is kind and loving has this
4. Loved and valued by someone
5. Lacking courage

Your ad can be placed here!

\$25

The Voice of MSW is free to MSW students. Your ad will help cover the costs of printing!

Ads space is limited. First come, First served.

contact: newspaper@themsww.org

Your ad can be placed here!

\$25

The Voice of MSW is free to MSW students. Your ad will help cover the costs of printing!

Ads space is limited. First come, First served.

contact: newspaper@themsww.org